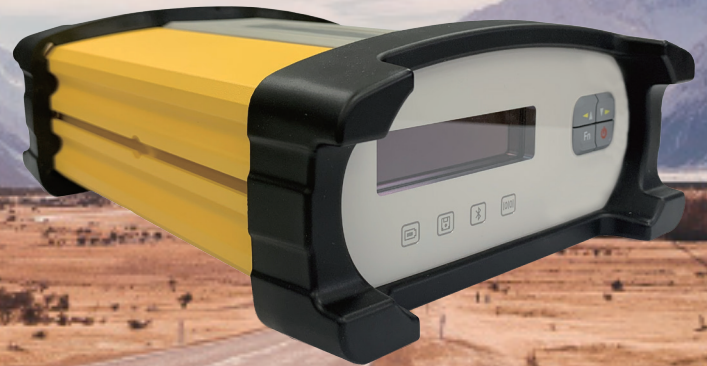


# NET20Plus

High-quality CORS Solution

NET20 Plus is specially designed for high-precision CORS reference stations. The rich data interface demands various of applications such as monitoring and machine control. User can use any phone or tablet to configurate device easily from the powerful Web UI.



## Multi-constellation and Multi-frequency

With 800 channels of GNSS tracking, NET20 Plus covers all GNSS signals including GPS, BDS, GLONASS, GALILEO and IRNSS, QZSS to provide stable and reliable data source.

## Rich Data Interface

Net20 Plus supports multiple data interface such as serial port, 1PPS, event to demand various of applications. Its powerful Linux system ensures a smooth operation without any worries.

## Rich Wireless Communication

Net20 Plus supports WIFI, Bluetooth, Ethernet, SIM card. User can send or receive data through any methods.

## Large Battery

The 13600 mAh battery lasts up to 12 hours to respond to emergencies. It also ensures the data is stored safely.

## Large Memory Storage

The internal 32 GB storage and TF card expansion ensure user to store the data for long time. It also supports FTP push to make it more convenient for data management.

## L-Band Atlas

Atlas is a service to provide global precision correction service over L-band satellites. With ATLAS subscription, Net20 Plus is able to achieve centimeter accuracy without any correction data.

## Web UI

It is able to view position status, configurate device, download data and update firmware from Web user interface with any phone, tablet or PC.

## Smart Alert

It will alert user through email or SMS once the charger is disconnected, battery level is too low, temperature is too high or memory storage is almost full.

## Rugged Design

Net20 Plus main body is using aluminum alloy materials to provide strong shock and vibration resistant characteristics. IP67 certification ensures operation in various of tough environments.

# Product Specification

GNSS		Ethernet	Support
Satellites Tracking	GPS: L1CA/L1P/L1C/L2P/L2C/L5 BDS: B1I/B2I/B3I/B1C/B2a/B2b/ ACEBOC GLONASS: G1/G2/G3, P1/P2 GALILEO: E1/E5a/E5b/E6/ALTB0C QZSS: L1CA/L1C/L2C/L5/LEX IRNSS: L5 SBAS <sup>1</sup> : L1/L5 L-Band: Atlas H10/H30/Basic	Port	1 x Lemo-0, 2-pin, DC in 1 x Lemo-0, 7-pin, USB OTG, host/client 1 x Lemo-0, 5-pin, RS232 1 x Lemo-0, 5-pin, RS232/RS485 1 x DB9 female, RS232 1 x LTE, SMA female 1 x 1PPS, SMA female 1 x Event, SMA female 1 x Nano SIM 1 x TF card 1 x RJ45 ethernet 1 x GNSS TNC female 1 x OSC, MMCX, 50Ω, 5/10 MHz
Channels	800	Baud Rate	9600 ~ 115200 bps
Signal Reacquisition	< 1 sec	Web UI	Support
Cold Start	< 60 sec	NMEA Output	NMEA0183, NMEA2000, Binary
Warm Start	< 30 sec	Correction Data	RTCM2.X, RTCM3.X, CMR, CMR+, DGPS, BINEX, RAW
Hot Start	< 10 sec	Data Recording	Support 8 recording simultaneously
Initialization Reliability	> 99.9%	Recording Format	Binary, RINEX, BINEX
Update Rate	10 Hz standard, up to 50 Hz	Recording Interval <sup>2</sup>	2s, 5s, 10s, 15s, 30s, 60s 1 Hz, 2 Hz, 5 Hz, 10 Hz, 20 Hz, 50 Hz
Operation System	Linux	Data Stream	1 x Bluetooth 3 x Serial port 4 x NTRIP server streams 1 x NTRIP client streams 5 x Socket (TCP/UDP) streams
Internal Memory	32 GB	Smart Alert	Email and SMS alert
External Memory	TF card	FTP Function	FTP server FTP client (FTP push)
<b>Performance</b>		NTP Server	Support
High Precision Static	H: 2 mm + 0.1 ppm V: 3 mm + 0.4 ppm	Others	DDNS, SNMPD, Firewall, VPN
Static/Fast Static	H: 2.5 mm + 0.1 ppm V: 3.5 mm + 0.4 ppm	<b>Physical</b>	
RTK	H: 8 mm + 1 ppm V: 15 mm + 1 ppm	Dimension	222 x 164 x 79 mm
Code Differential	H: 0.3 m V: 0.6 m	Weight	2 Kg
SBAS	H: 0.3 m V: 0.6 m	Screen	2.75", 64 x 256 pix, yellow font
L-Band	Atlas H10: 4 cm RMS Atlas H30: 15 cm RMS Atlas Basic: 30 cm RMS	Operating Temperature	-40°C ~ +65°C
1PPS	10 ns	Storage Temperature	-45°C ~ +80°C
<b>Internet Modem</b>		Water/Dust Proof	IP67
Support Band	GSM/WCDMA/LTE	Shock and Vibration	Survive a 1.2 m drop on concrete floor
<b>Power Supply</b>		Humidity	Up to 100%
Battery	7.2 V, 13600mAh	Indicators	Battery, recording, Bluetooth, datalink
Working Time	Up to 12 hours with internal battery	Button	1 x Power/confirm button 1 x Function button 2 x Selection button
Voltage	9~28 VDC, 2A with over-voltage protection	Certificate	CE
<b>Communication</b>			
Bluetooth	V2.1 + EDR/V4.1 dual model		
WIFI	802.11 b/g/n, hotspot/client mode		

1. BAS supports WAAS, EGNOS, GAGAN, SDCM, MSAS.

2. The maximum rate depends on the GNSS registration.

