

# CARLSON SURVCE / SURVPC



## Take Your Choice

Get the world's most flexible & powerful data collection software:

- SurvCE for handheld data collectors
- SurvPC for rugged PCs



**DICARLO**

SALES - SUPPLIES - REPAIR - RENTALS

1-800-974-6298

[www.dicarlotech.com](http://www.dicarlotech.com)



**Carlson**<sup>®</sup>

800-989-5028 • [www.carlsonsw.com](http://www.carlsonsw.com)

# CARLSON SURVCE

WORK WITH THE FIRST CHOICE IN DATA COLLECTION SOFTWARE

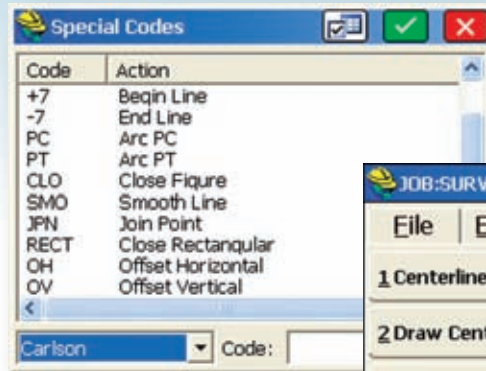
## Carlson SurvCE's powerful features help you do more, do it accurately & in less time:

- **Powerful Rounding:** favored by U.S. DOTs and heavy highway contractors in Spain, Australia and around the world
- **Advanced functionality** for staking intersections and cul-de-sacs using Carlson Road Network Files
- **Highly graphical and intuitive** user interface – the software prompts you so no detail is missed
- **Strong GIS features** for accurate data capture, including attribute data, that allows seamless links to Esri®
- **True versatility:** SurvCE runs on 99% of all GPS and total station equipment models in service today
- **Optimal Field-to-Finish:** no need to spend extra hours in the office to make drawings
- **Easy data exchange** due to rich support of CAD file formats and .dwg, .dgn, .shp
- **More field capabilities** with quick and easy volume calculation and ability to generate points from polylines
- **Cut/Fill stakeout** using surface files

## Top New Features of Carlson SurvCE now allow users to:

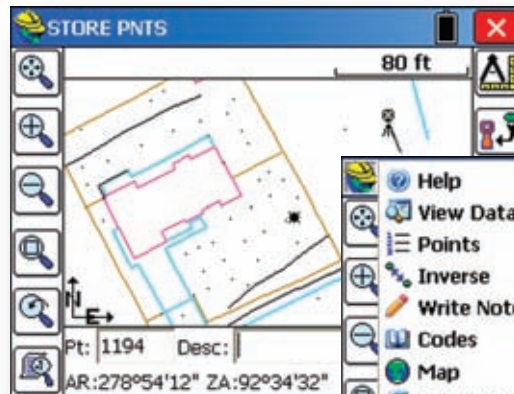
1. Compute/store multiple points based on stations/offsets definition at once
2. Use an optional profile to compute the elevations
3. "Shift" current GNSS corrections coming from a Reference Base or NTRIP network, to match an existing User Coordinate System with no need to produce a new localization.
4. Compute/store points at any horizontal alignment characteristic elements using also skew, intersect, PI, bisector, and more methods
5. Export ASCII point data in a flexible manner, controlling the fields exported and the data, geometry or non-geometry point data (GIS data) to export
6. Load TXT or CSV user-defined localization specific point data in Load Points: LAT/LON optional elevation and point coordinates
7. Inspect and stake locations on a surface in a control manner, using Point, OSNAP, Station/Offset if a horizontal alignment is used
8. View the surface and the current instrument reading in a section view style
9. Use a unique Feature Definition file for all your GIS features
10. Use predefined Notes for Feature Codes

Carlson offers the Surveyor, Surveyor+ or CarlsonMINI — fast, durable, powerful and completely ruggedized data collectors, which come loaded with SurvCE.



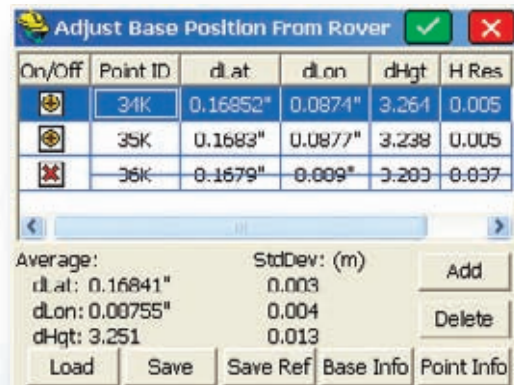
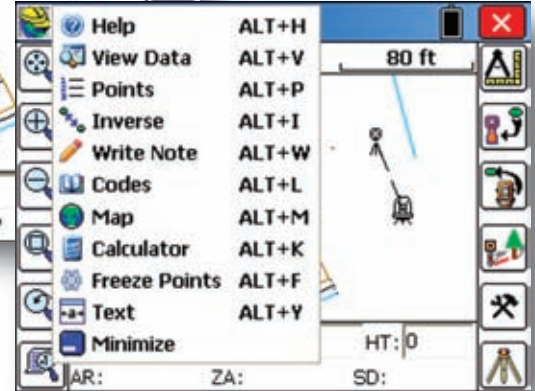
Feature Coding – Add numerous coding styles & functions

Tab-Based MENU Structure – All commands are visible in each menu



Collect points in the graphics mode

Hot List lets users jump to routines



Base Corrections from Rover feature

## SurvCE Languages:

In addition to English, SurvCE is available in 17 additional languages, including:

- Spanish ■ Portuguese
- French-Canadian ■ Korean
- French ■ Czech ■ Dutch
- German ■ Simplified Chinese
- Romanian ■ Greek ■ Italian
- Polish ■ Swedish ■ Turkish
- Serbian ■ Croatian ■ Hungarian

Carlson Data Collection Software Provides Advanced Functionality, Ease-Of-Use

# CARLSON SURVPC

ALL THE FUNCTIONALITY OF SURVCE ON A FULL WINDOWS® PC

**Carlson SurvPC delivers the world's most flexible & powerful data collection software on the PC platform. This means:**

- Increased hardware capability
- Increased virtual memory = increased ability to work with large sets of data
- Increased screen size & more convenient touch screen usage

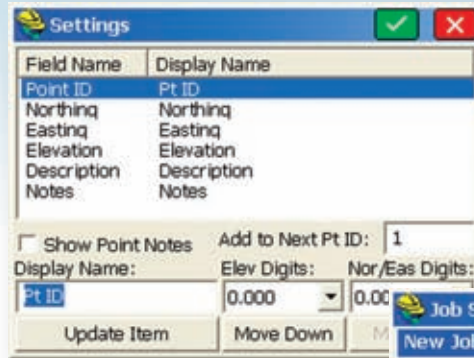
**SurvPC advantages include:**

- Bigger screen display
- Bigger buttons (on touchscreen computers)
- More graphic power
- More processing power
- Full Windows PC compatibility
- File formats same as Carlson Office software (.fld vs. .fcl files for field-to-finish)
- Compatible symbol libraries
- Ability to import Microstation .dgn files
- Import and export AutoCAD .dwg files
- Aerial photo overlays
- Output to Excel

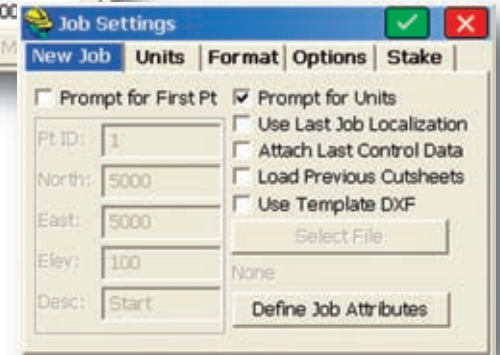
**SurvPC Minimum Requirements:**

- Windows OS: Windows 2000, Windows XP, Windows Vista, 32-bit and 64-bit, Windows 7, 32-bit and 64-bit
- Processor speed: any Pentium compatible, Atom supported
- RAM, 256MB RAM required (1GB recommended)
- 1GB hard-drive space required

SurvPC may be purchased for ANY standard Windows PC computer. Carlson recommends utilizing the software with the Carlson Supervisor+ handheld PC as an ideal combination.



**Job Settings –**  
Customize layers,  
colors, cutsheets,  
descriptions and  
much more



**Point Number by Interval –**  
Advanced point ID controls

*Both Carlson SurvCE and SurvPC are complete data collection systems for Real Time (RTK) GPS and Total Stations with in-field coordinate geometry.*

*Both support the widest range of popular and new release RTK GPS and conventional / robotic total stations.*



**& Superior Capability Combined With Excellent Service And Technical Support.**

## Carlson Software

Carlson Software develops software solutions that bring the land development professional from concept to completion – the full cycle of a project.

An independent company founded in 1983, Carlson Software is well known for its comprehensive civil engineering, land surveying, machine control and positioning, and mining software solutions. Its dedication to customer service is unique in the industry.

### Get FREE Technical Support

Get support from Carlson via phone, email, discussion groups and webcasts. There is no product retirement. Carlson Software supports all versions of all its products. Email [support@carlsonsw.com](mailto:support@carlsonsw.com).

For sales information or to locate a reseller please call or visit:

**800-989-5028**

or 606-564-5028

**[www.carlsonsw.com](http://www.carlsonsw.com)**

## Companion Products

For surveying, civil engineering, mining, construction, and more, Carlson Software is the one place to find the complete software solution for the entire lifecycle of your projects.

### Carlson Civil

Get the most robust automation and ease-of-use of any civil design solution available today. A wide selection of “power” tools enable users to increase productivity while they create better road, site, and/or subdivision designs in less time. Works with AutoCAD® or IntelliCAD®.



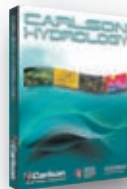
### Carlson Survey

An incredibly productive and intuitive survey solution with all versions complete with SurvNET Network Least Squares and drivers to connect to essentially every manufacturer's proprietary hardware and software.



### Carlson Hydrology

Full 3D site, road and lot design feeds directly into flow calculations and drainage design. Carlson's HydroNET gives you the automation and precision you need. Available with HydroCAD®.



### Carlson Point Cloud

For laser scanner users, Carlson Point Cloud delivers a whole new level of powerful automation. Get the ability to process millions of data points with Carlson ease-of-use, plus export surface models, points, contours, breaklines and profiles to CAD.



### Carlson Takeoff

Provides fast and accurate CAD-based project estimating and, once you get the job, helps save both time and money by minimizing staking and gives you easy-to-use evaluation tools for quantity and quality control.



### Carlson Grade

Ideal for real-time grading applications, allowing heavy equipment operators to grade sites without stakes, even in blinding conditions. A glance at a screen mounted in the cab provides cut/fill and position information and enables achievement of the proper grade with the first pass. Recognizes standard .dwg files.



### Carlson Mining

Chosen by 90 percent of the U.S. coal mining industry, Carlson Mining is the acknowledged industry standard. Available in modules — Geology, Surface, Underground and Basic Mining — that provide advanced technology. Choose only what you need.



### Carlson Construction

Designed specifically for the model-building needs of the land development professional, Carlson Construction is an integrated design and 3D surface modeling software solution for site and road construction. It offers powerful inspection and 3D viewing tools for elevating 2D designs to 3D model files.



### Carlson Natural Regrade

Go “green,” save and get greater sustainability with this remarkable program for anyone faced with disturbed lands. Designs the land to be as it would have naturally formed on that site over thousands of years, providing an affordable and natural way to reclaim land.



### Carlson Surveyor/Surveyor+

Fast, incredibly durable, and powerful, a completely ruggedized data collector with an IP67 water and dust resistant Ingress rating, plus more RAM and increased operating speed. Encased in magnesium housing and weighs just two pounds with keyboard sized to work with even the largest or gloved hands. Runs on Windows Mobile 6.1 and with Carlson SurvCE.



### Carlson Surveyor+ GPS

This is Carlson's accurate, affordable, rugged, and reliable all-in-one Surveyor+ GPS System — a dual frequency RTK GNSS receiver and field controller. The unit is fully scalable from the Carlson Surveyor+ data collector and it includes drivers for most total stations and robotics.

